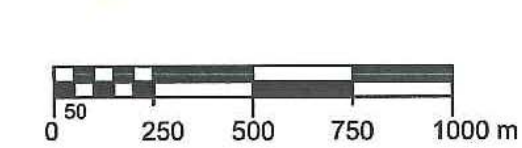


MIDHURST SETTLEMENT AREA  
SECONDARY PLAN

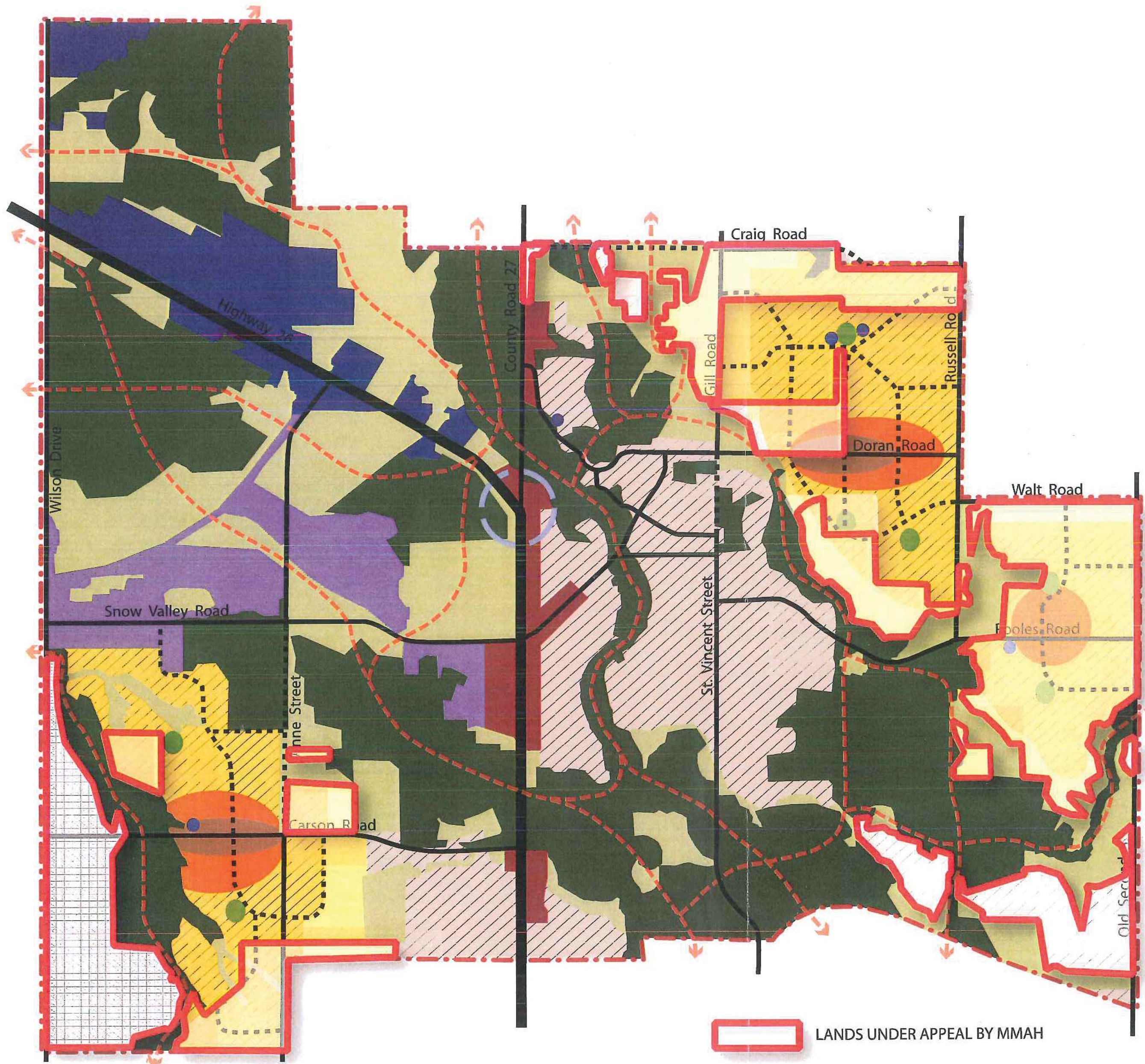
TOWNSHIP OF SPRINGWATER  
October 29, 2008

Schedule A - Land Use

- Commercial / Mixed Use
- Administration / Government
- Employment
- Environmental Protection Area I
- Environmental Protection Area II
- Midhurst Village
- Midhurst Transition Residential
- Midhurst Low Density Residential
- Midhurst Medium Density Residential
- Midhurst High Density Residential / Mixed Use
- Future Development Potential
- Park
- School / Institutional
- Provincial Highway
- Primary Road
- Potential Primary Road
- Settlement Area Boundary
- Environmental Connections / Potential Trails
- Future Intersection Improvements



November 27, 2012

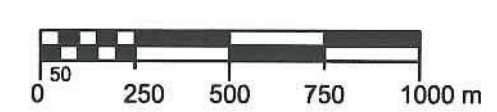


MIDHURST SETTLEMENT AREA  
SECONDARY PLAN

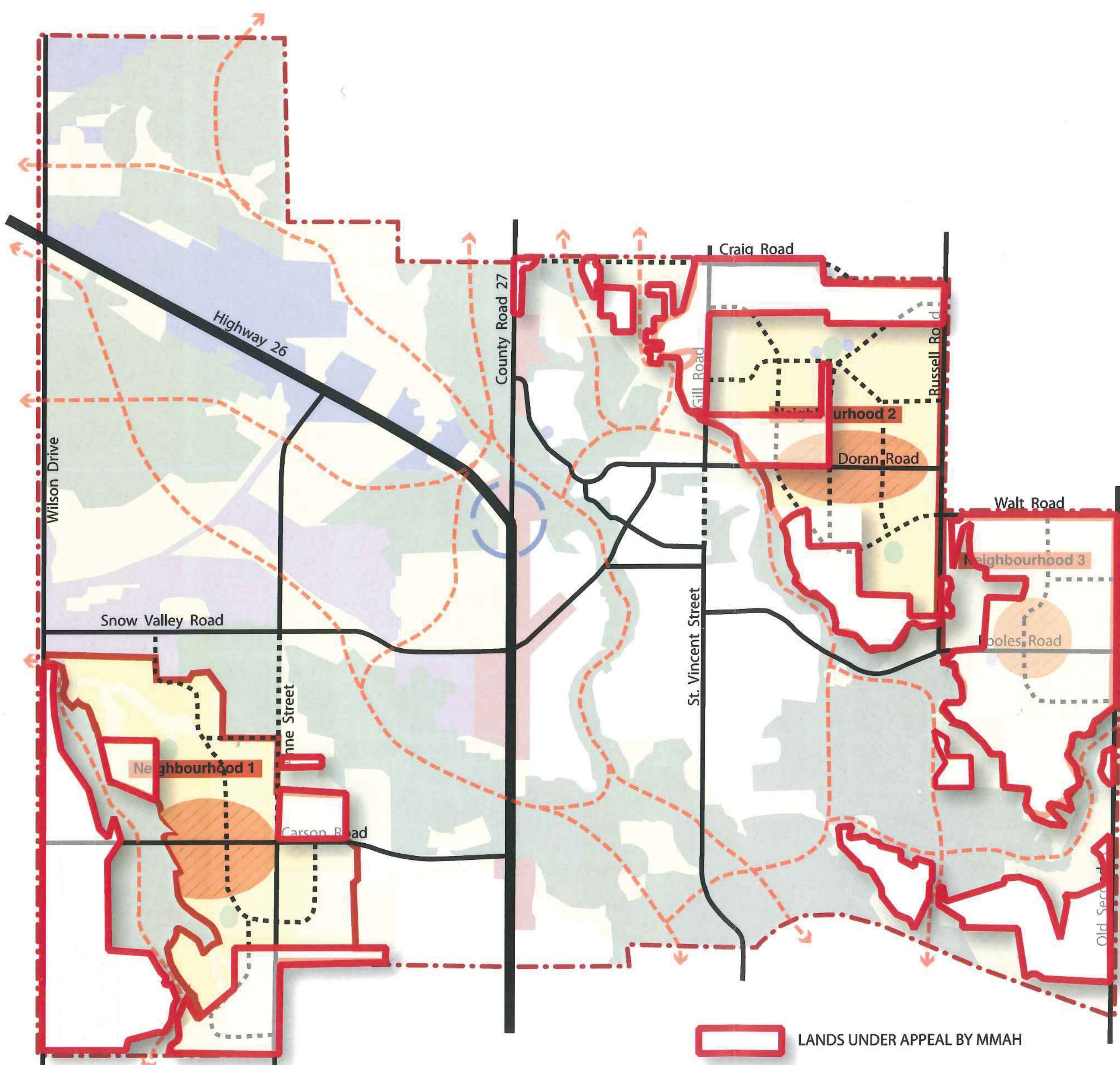
TOWNSHIP OF SPRINGWATER  
October 29, 2008

Schedule 'B' -  
Neighbourhood Structure  
& Road Network/Trails

- Neighbourhood Boundaries
- Neighbourhood Centres
- Provincial Highway
- Primary Road
- Potential Primary Road
- Settlement Area Boundary
- Environmental Connections / Potential Trails
- Future Intersection Improvements



November 27, 2012



FOR DISCUSSION  
PURPOSES ONLY